

# SUPERIOR PUMP

BUILT TO LAST

POOL PRODUCTS

## SUMP PUMP

AUTOMATIC ON/OFF

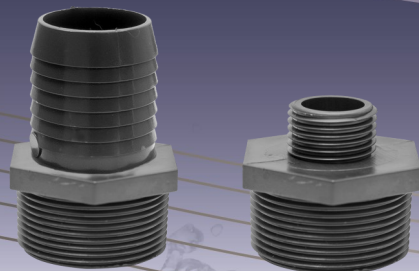
### 92588 FEATURES

- Energy efficient 1/2 HP split capacitor motor. Lower amp draw, runs cooler, lasts longer
- Rugged solid cast iron pump base & stainless steel housing
- Hermetically sealed, oil cooled motor for long pump life
- Automatic tethered float switch
- Reinforced thermoplastic vortex impeller
- 2" NPT discharge
- Includes 1-1/2" NPT adapter, 1-1/2" NPT barb adapter and 3/4" garden hose adapter
- Handles up to 1/2" solids
- Motor is thermally protected with automatic reset thermal protector
- Stainless steel motor shaft
- Carbon/ceramic/stainless steel mechanical shaft seal
- Upper and lower permanently lubricated ball bearings
- Stainless steel fasteners
- Bottom screen removes easily for cleaning
- Acceptable for indoor or outdoor use
- Compact, lightweight design is easily portable
- Every unit is 100% pressure tested
- Includes 25' nylon rope



## 3 YEAR WARRANTY

## 4500 GALLONS PER HOUR





## SUMP PUMP AUTOMATIC ON/



### 92588 - Application

Submersible sump pump for water removal

### Motor Specifications

Horsepower	1/2 HP
Voltage	120
Amps	7.5
Hertz	60 Hz
Phase	Single
RPM	3450 RPM
Motor Type	Permanent Split Capacitor (PSC)
Insulation	Class A
Circuit Requirements	15 amp (min) individual circuit
Duty Rating	Continuous*
Shaft Seal	Carbon/ceramic and stainless steel
Motor Shaft	Stainless Steel
Upper Motor Bearing	Ball Bearing
Lower Motor Bearing	Ball Bearing
Cooling	Oil cooled
Motor Protection	Auto reset thermal overload protector

\*For continuous operation, the water depth must be at least 6" to prevent the motor from overheating.

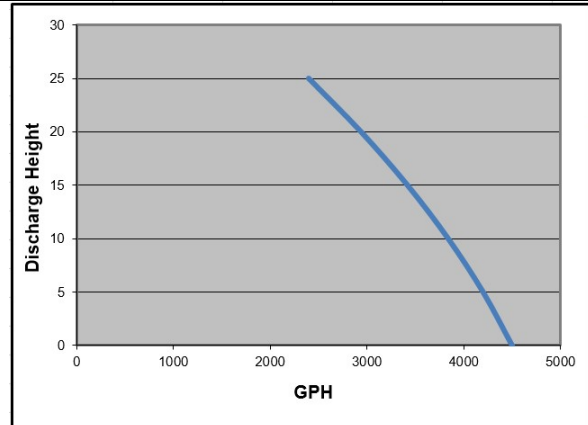
### Pump Specifications

Discharge Size	2" NPT, 1-1/2" NPT, & 3/4" Garden hose thread
Cord Length	25'
Cord Type	SJTW, UL listed, 3-wire, 18 gauge
Pump Housing	Stainless steel
Pump Base	Cast iron
Impeller Material	Reinforced thermoplastic
Impeller Type	Vortex
Gasket	Buna-N
Solids Handling	1/2" spherical
Liquid Temp. Range	32°- 120° F
Operation	Automatic or non-automatic
Fasteners	Stainless steel
Max Flow Rate	75 Gallons per minute
Maximum Head	25 feet
Max Pressure	10.8 psi
Weight	23.0 lbs

### Automatic Switch Specifications

Type	Wide angle tethered
Switch on point	16"
Switch off point	8"
Material	ABS
Cord Type	SJOW, UL listed, 2-wire, 18 gauge

### Performances



Discharge Height	0'	5'	10'	15'	20'	25'
Gallons Per Minute	75	70	64	57	49	40
Gallons Per Hour	4500	4200	3840	3420	2940	2400

### Dimensions

