

CHOOSE THE INDUSTRY-LEADING POOL & SPA

# LIGHTS

**Spectrum™ 360** incorporates the latest generation LED technology and thermal management system to ensure maximum light output and reliability. In addition, **Spectrum™ 360** lights are extremely energy efficient and long lasting. The entire system is low-voltage ensuring safety at all times.

- 6<sup>1/2</sup>" Flush Mount light maximizes panoramic light delivery
- UL approved PVC niche with fully adjustable plaster ring for easy installation
- Detachable cable for easy installation
- Energy efficient LED drivers only 24WATT versus the traditional 400WATT incandescent
- Over 20x longer life expectancy versus the traditional incandescent
- Ultra safe, low-voltage lighting (12V)

## PRODUCT OPTIONS:

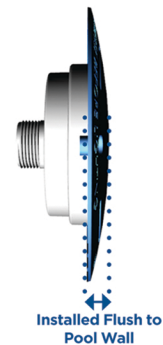
### LIGHT COLORS:

Blue, Multi-Color®, White, and Turtle-friendly Pentair, Hayward and Jandy compatible programming

### CABLE LENGTHS:

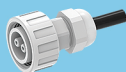
50ft., 100ft., 150ft.

### Product Size:



## DUAL-USE NICHELESS LIGHTS

NEW CONSTRUCTION &  
RETRO USE WITH PLUG KIT



Part #30001

### NEW CONSTRUCTION



2"

Spectrum Nicheless

**JUST RELEASED**

### RETRO USE



5"

Vivid Nicheless Light

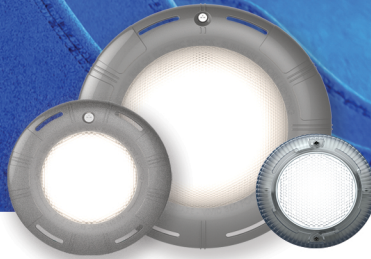
**Spectrum™**  
**360**  
LED POOL LIGHTS



**BLUE SQUARE**  
bluesquaremfg.com



# BRING YOUR POOL & SPA BACK TO LIFE

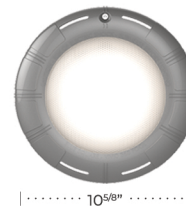


## THE WORLD OF REPLACEMENT LED LIGHTING JUST GOT A WHOLE LOT BRIGHTER

The **Vivid 360™** Replacement LED is engineered to replace most existing pool and spa lights to deliver more colorful and vivid lighting than ever before. Whether you need to replace a broken light or you just want to upgrade to a more colorful brighter LED light, **Vivid 360™** is the preferred choice of pool owners and industry experts alike.

- Replacements for pool, spa, nicheless, and fiber optic lighting
- In most cases new lighting can be installed using existing lighting cable with our patented plug kits, eliminating the need to pull new cable
- Public and semi-public commercial pool compatible
- Adjustable tab system fits most lighting niches including Jandy®, Hayward® and Pentair®x
- Saves pool owners and service professionals time and money with product warranty, durability and service-friendly design
- Replaces both 1'-1/2" nicheless lights and fiber optics
- 12-14 volt transformer required for all of our low-voltage lighting

**Pool Replacement Light**



**Pool Plug Kit**  
Part #40001



**Spa Replacement Light**



**Spa Plug Kit**  
Part #40001



## DUAL-USE NICHELESS LIGHTS

NEW CONSTRUCTION &  
RETRO USE WITH PLUG KIT



### NEW CONSTRUCTION



Spectrum Nicheless

**JUST RELEASED**

### RETRO USE



Vivid Nicheless Light

**Vivid360**  
POOL & SPA REPLACEMENT LIGHTS



**BLUE SQUARE**  
bluesquaremfg.com