

KEEPING POOLS CLEAN & BEAUTIFUL

THE MOST EFFICIENT IN-FLOOR CLEANER

Q360+ is a complete in-floor system that automatically cleans your pool while you relax. Every system is custom designed to maximize circulation of your pool. It efficiently cleans and circulates water through innovative products.

Q360+



Q360 PERFORMANCE PLUS™ CLEANING JETS

- Save up to 15% in chemical costs & 20-30% in heating costs
- Deliver more cleaning distance and more efficiency
- Optimized for use with today's latest energy efficient pumps



MAXIMUM CLEANING & CIRCULATION EFFICIENCY

- Delivers maximum flow with minimal pressure variations
- 6-port design efficiently distributes water flow to each jet
- 8-veined Power Turbine for smooth energy transfer

**Eclipse™
Drain**



THE MOST ADVANCED MAIN DRAIN ON THE MARKET

- Single source suction
- Removes large debris with beauty and ease
- Fits with any pool finish or shape

Abyss™



THE LARGEST DEBRIS CAPACITY ON THE MARKET

- Designed for maximum flow & high-volume debris without risking equipment
- High-capacity basket
- Can plumb two or more for heavy debris environments



INNOVATIVE POOL LIGHTING WITH INTEGRATED PLUG KIT

The latest generation LED technology and thermal management system to ensure maximum light output and reliability.



Spectrum™
360

THE LATEST IN LED LIGHTING TECHNOLOGY

- 6 1/2" Flush Mount light maximizes panoramic light delivery
- Fully adjustable Plaster Ring for easy installation
- Detachable cable for easy installation
- Energy efficient LED drivers only 24WATT versus the traditional 400WATT incandescent
- Over 20x longer life expectancy versus the traditional incandescent
- Ultra safe, low voltage lighting (12V)

UPDATE YOUR BACKYARD WITH VIVID LIGHT



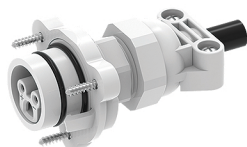
Vivid360
POOL & SPA REPLACEMENT LIGHTS

- Replacements for pool, spa, nicheless, and fiber optic lighting
- In most cases new lighting can be installed using existing lighting cable with our patented plug kits, eliminating the need to pull new cable
- Public and semi-public commercial pool compatible
- Adjustable tab system fits most lighting niches including Jandy®, Hayward® and Pentair®x
- Saves pool owners and service professionals time and money with product warranty, durability and service-friendly design
- Replaces both 1'-1/2" nicheless lights and fiber optics
- 12-14 volt transformer required for all of our low-voltage lighting

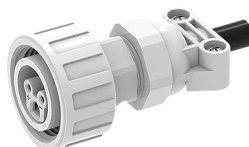
QUICK CONNECT PLUG KITS FOR VIVID 360 LIGHTS MAKE A DIFFERENCE



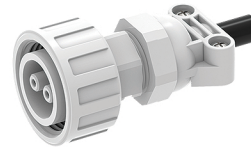
Quick connect/detachment
to the back of the light.



Pool Plug Kit
Part # 400001



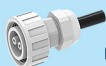
Spa Plug Kit
Part # 400001



Nicheless Plug Kit
Part # 300000

DUAL-USE NICHELESS LIGHTS

NEW CONSTRUCTION &
RETRO USE WITH PLUG KIT



Part #300001

NEW CONSTRUCTION



..... 2'

Spectrum Nicheless

RETRO USE



..... 5'

Vivid Nicheless Light

